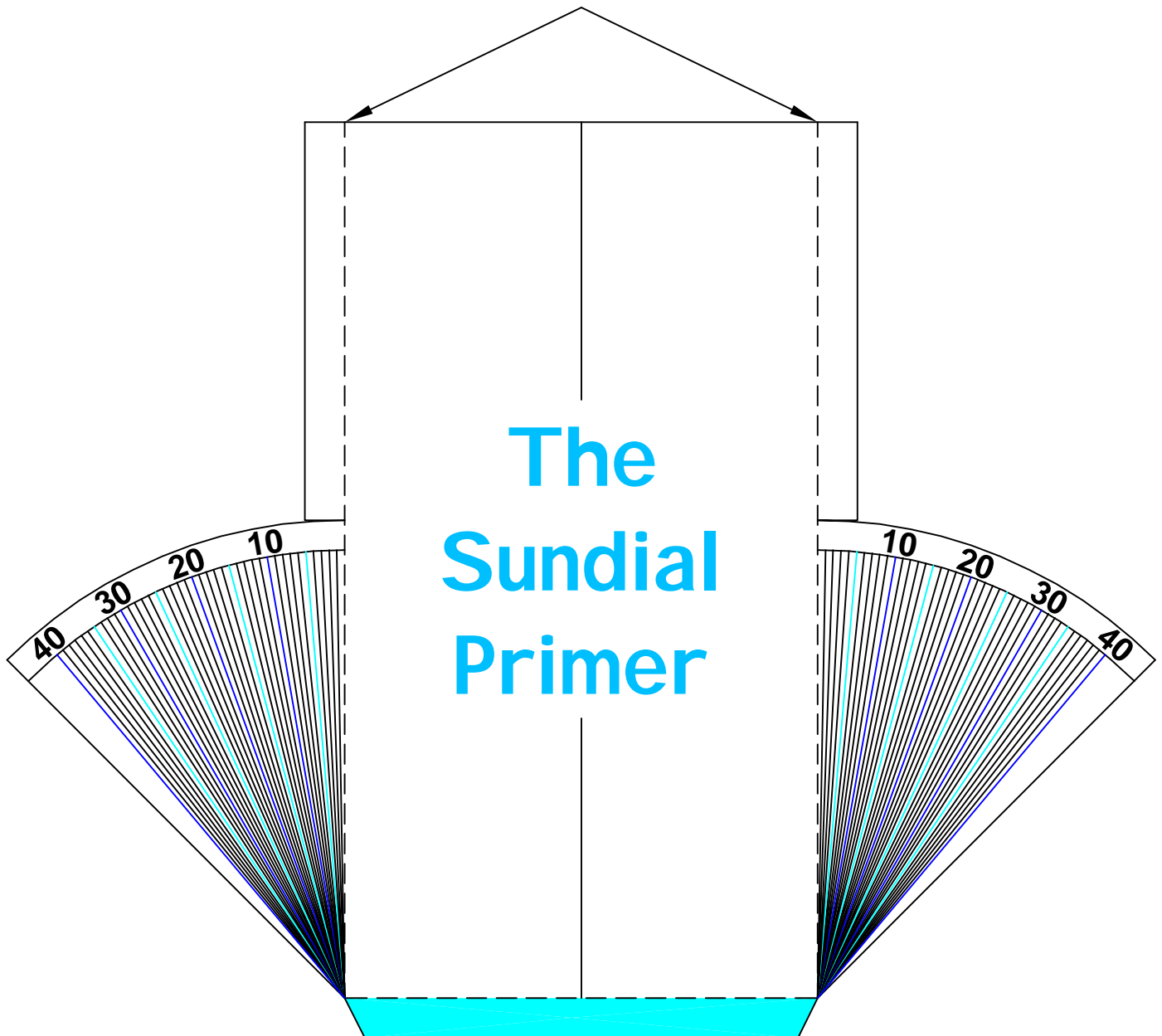
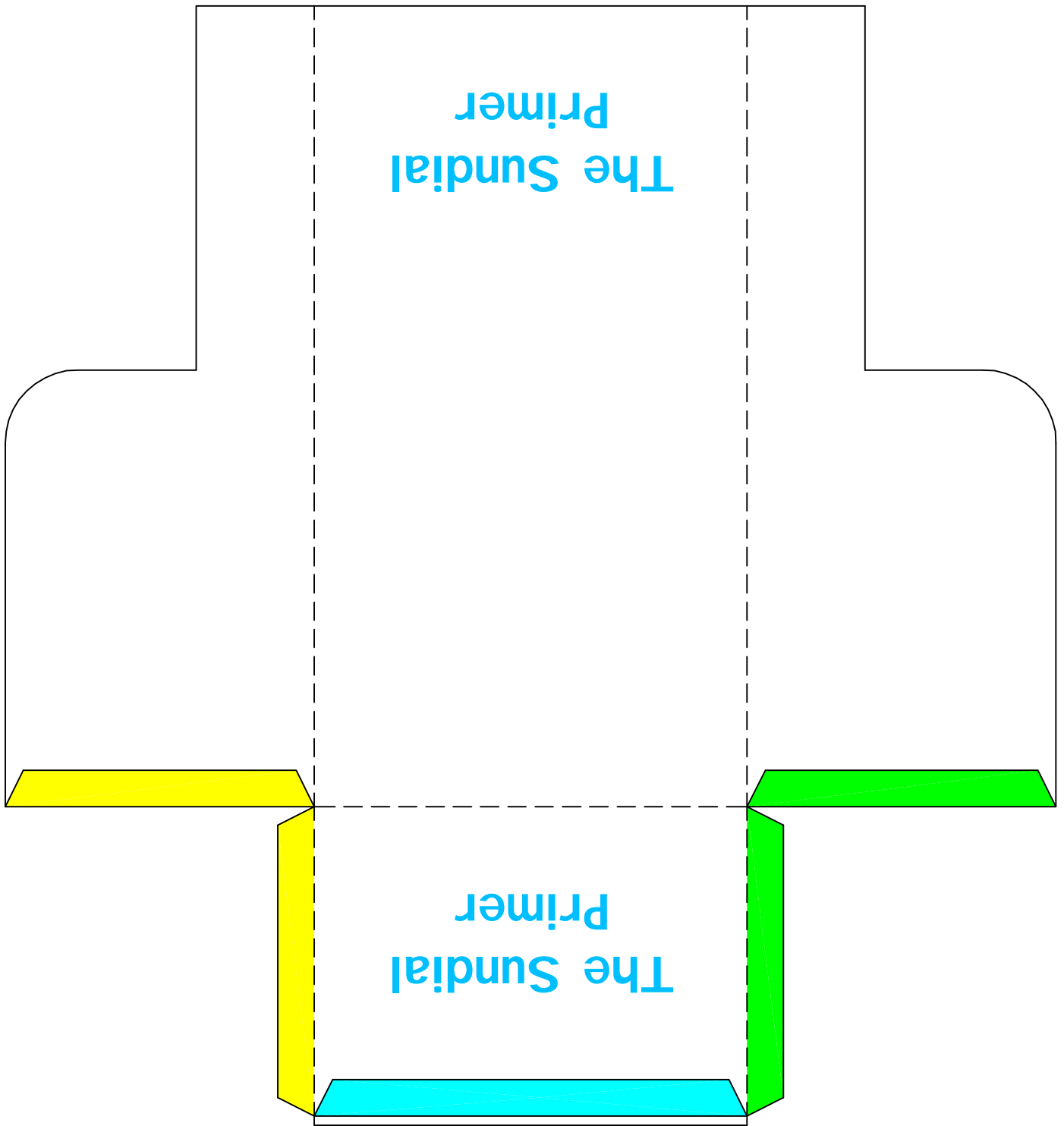


Fold along the dashed lines at 90° to reinforce the edge.



Cut out the two parts of the adjustable base and fold along the dashed.
All the folds on this part are mountain folds.



This small rectangle extends above the top of the base. It keeps the dial plate square and prevents it from sliding off the base.

Cut out the two parts of the adjustable base and fold along the dashed.
All the folds on this part are valley folds.