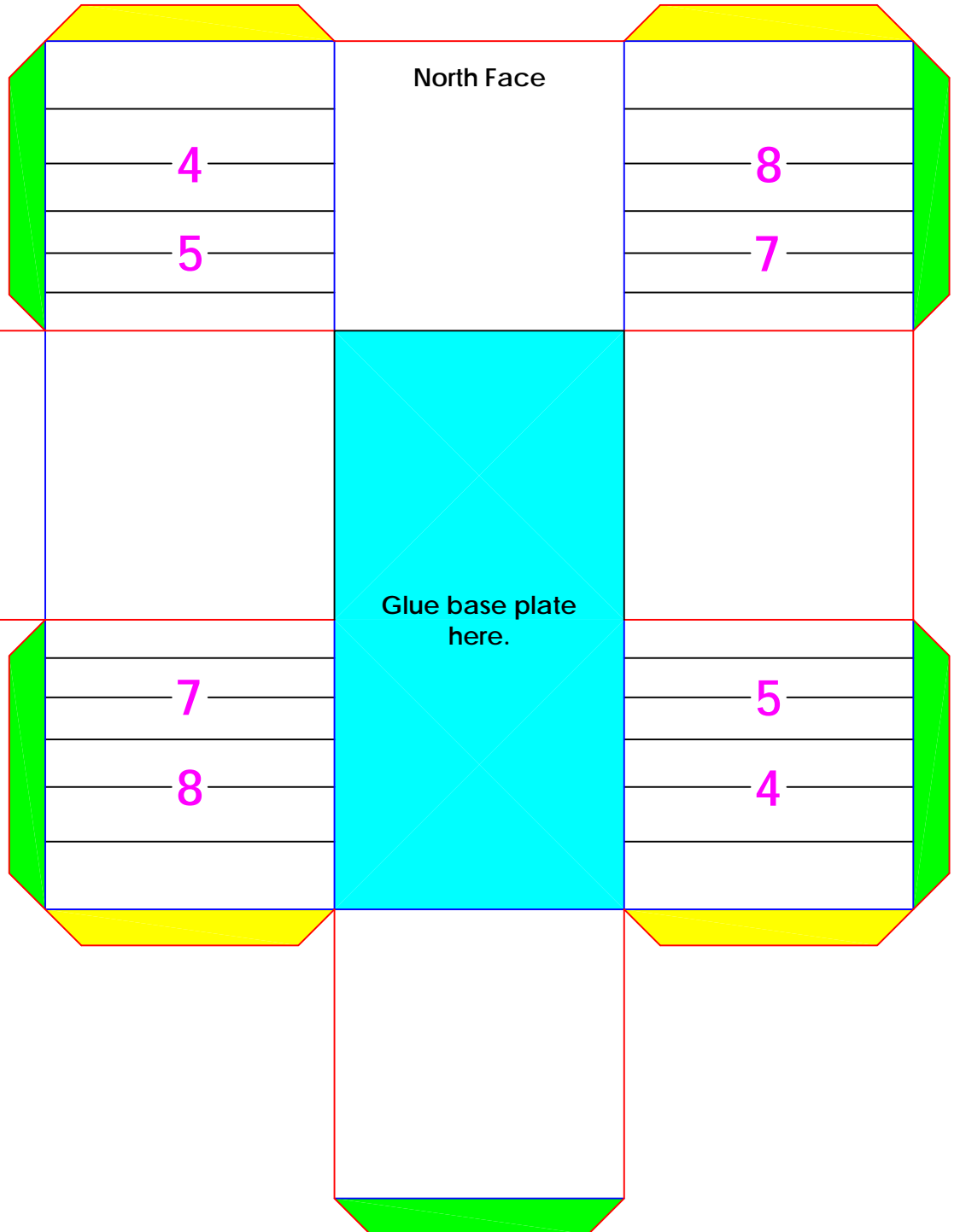


Optional tab supports for
inner corners of cross.
Glue on the inside.



Polar Sundial

North Face

4

8

5

7

Connect this tab to
the East edge.

Glue base plate
here.

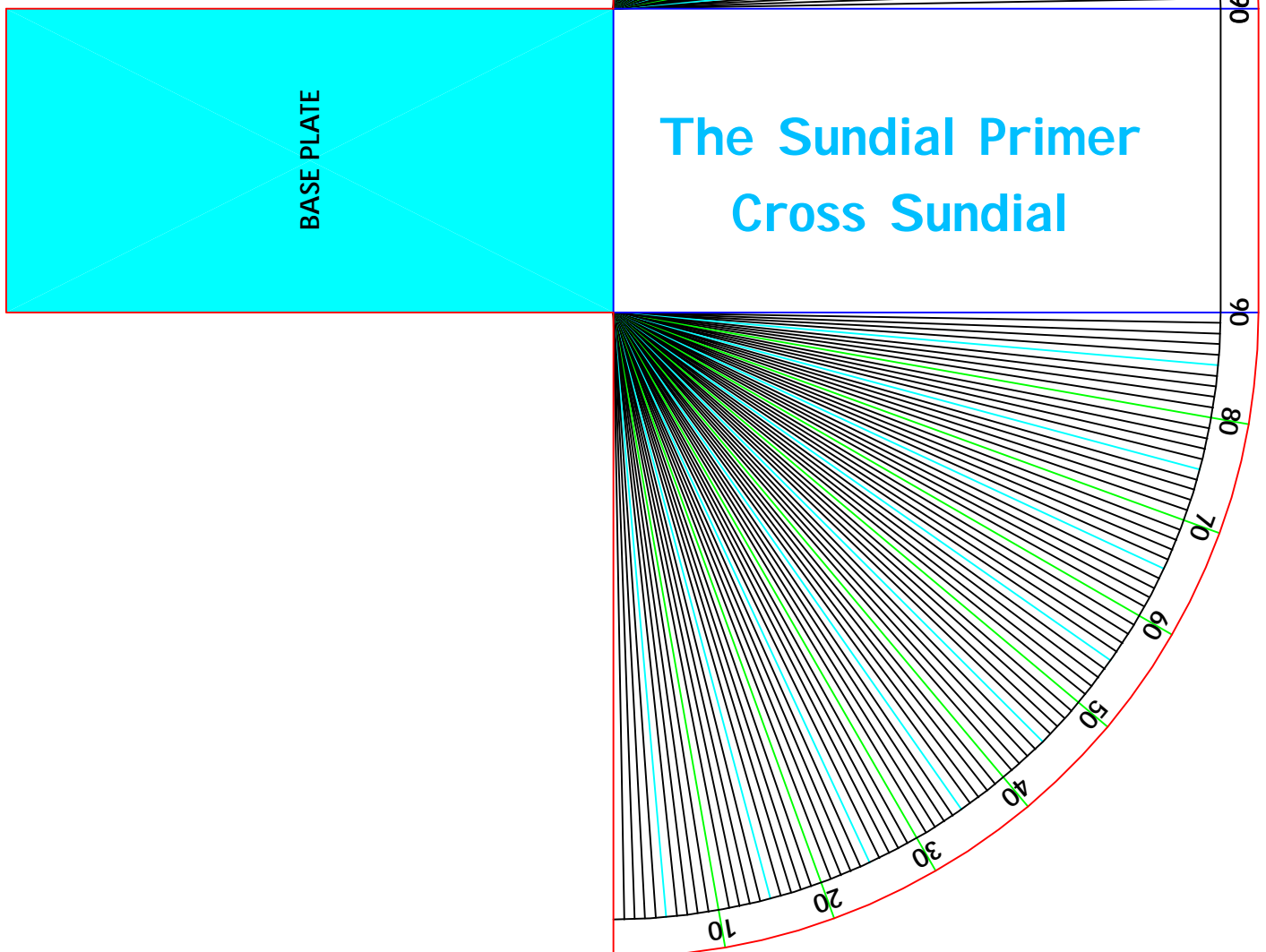
7

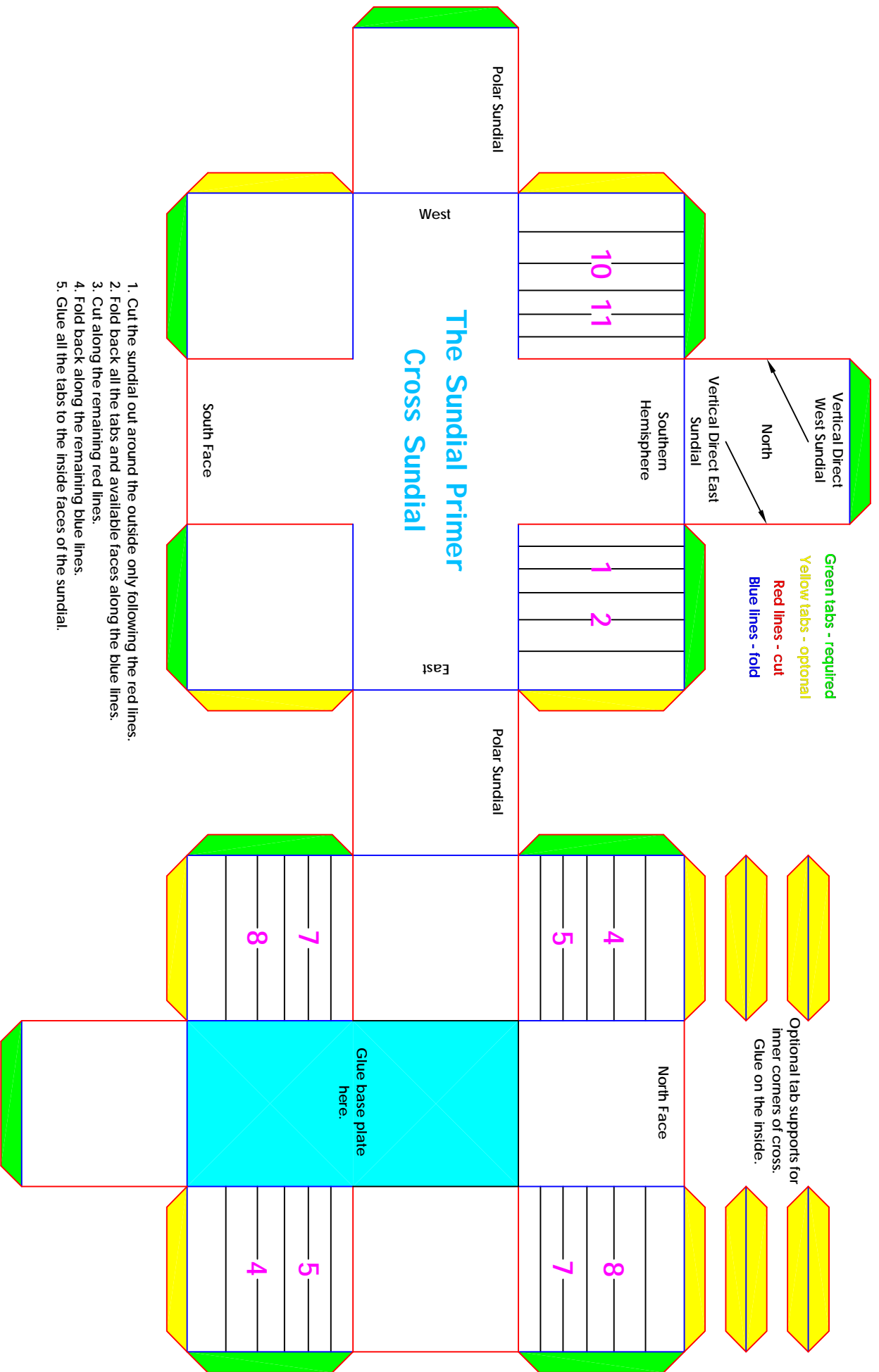
5

8

4

1. Cut the sundial base out around the outside following the red lines.
2. Fold back along your latitude lines.
3. Cut about 1/4" outside and parallel to the folds. This will make tabs for gluing the base to.
4. Fold back along the remaining blue lines.
5. Fold the tabs and glue them to the back face of the base.
6. Glue the cross sundial to the base by matching the cyan coloured rectangles.
7. Reinforce the base, if necessary, to maintain the correct angle.





Green tabs - required
 Yellow tabs - optional
 Red lines - cut
 Blue lines - fold

Optional tab supports for
 inner corners of cross.
 Glue on the inside.

The Sundial Primer Cross Sundial

1. Cut the sundial out around the outside only following the red lines.
2. Fold back all the tabs and available faces along the blue lines.
3. Cut along the remaining red lines.
4. Fold back along the remaining blue lines.
5. Glue all the tabs to the inside faces of the sundial.

1. Cut the sundial base out around the outside following the red lines.
2. Fold back along your latitude lines.
3. Cut about 1/4" outside and parallel to the folds. This will make tabs for gluing the base to.
4. Fold back along the remaining blue lines.
5. Fold the tabs and glue them to the back face of the base.
6. Glue the cross sundial to the base by matching the cyan coloured rectangles.
7. Reinforce the base, if necessary, to maintain the correct angle.

