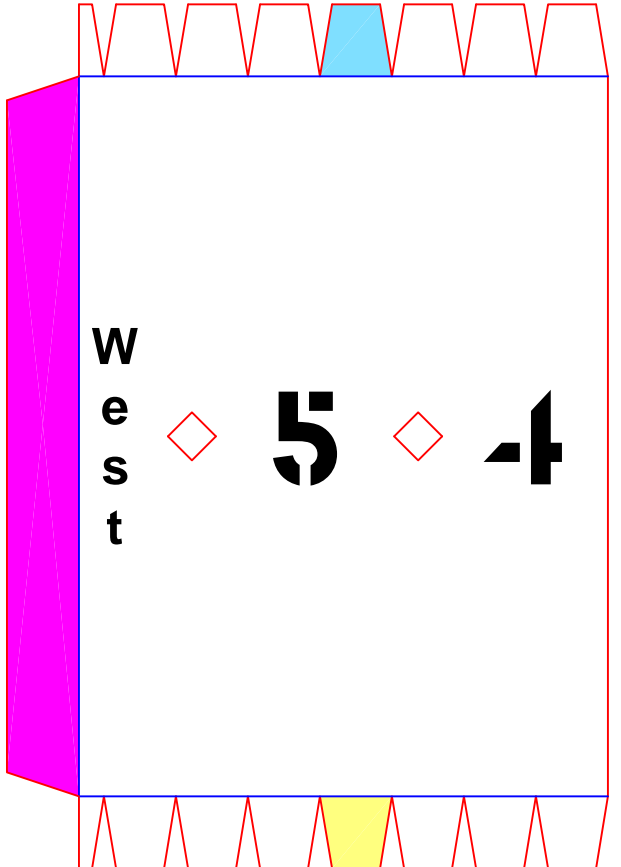
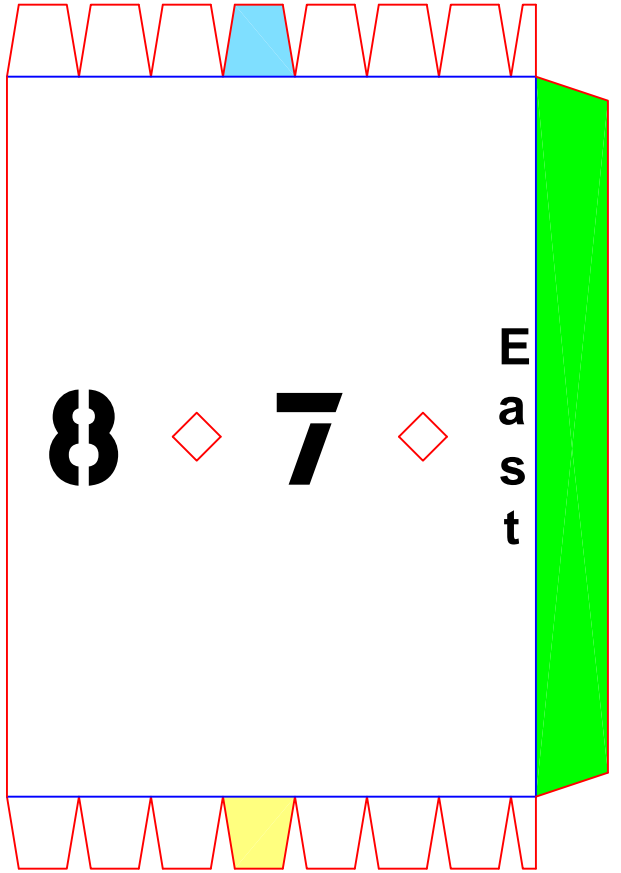
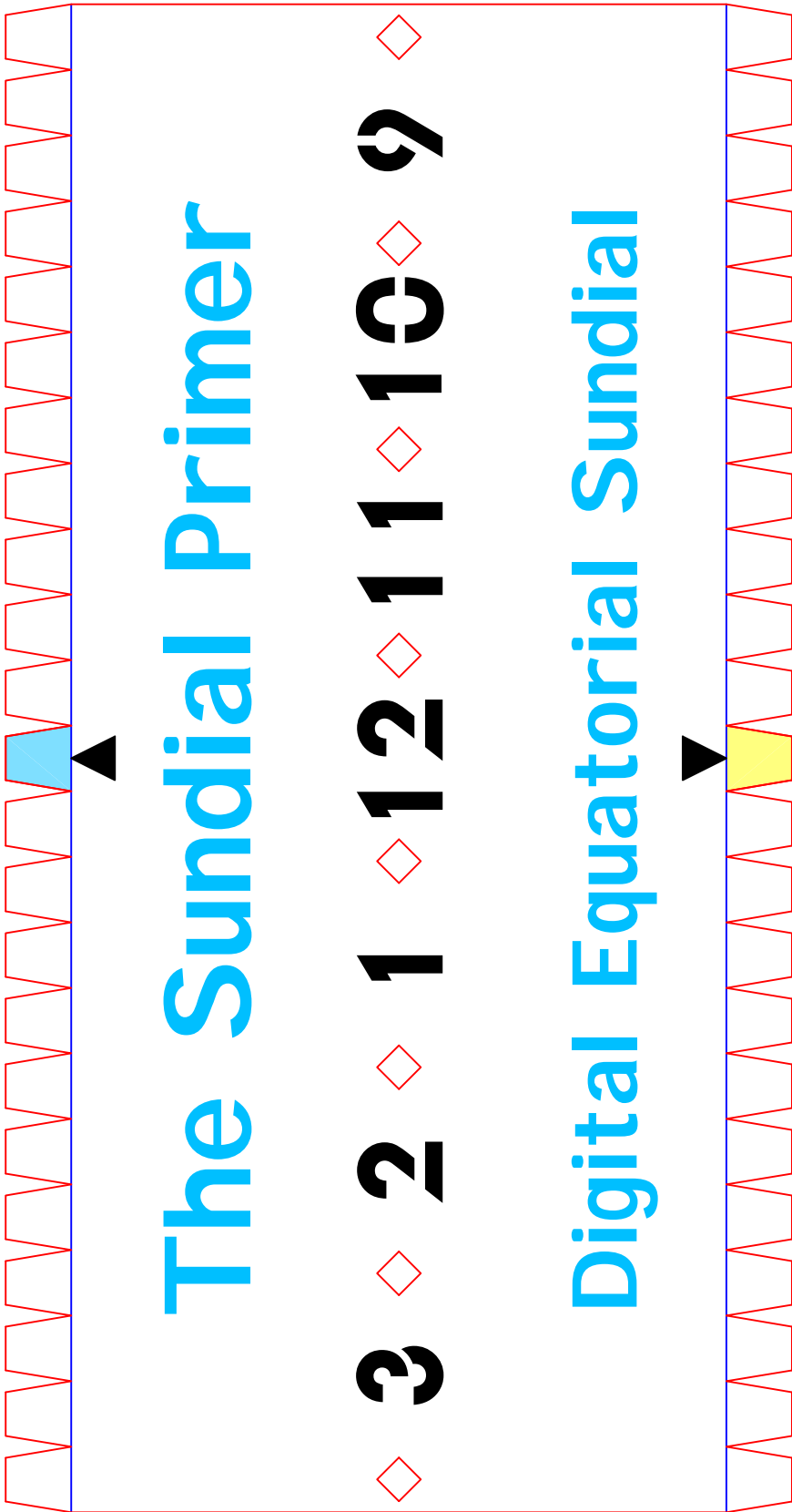


First glue the tabs of the hour ring to the back of the semi-circles. Then glue the quarter circles to the back of the tabs to reinforce the hour ring.



Cut on the red lines.
Fold on the blue lines.

Cut out the hour numbers and diamonds on the hour ring with a craft knife.
BE CAREFUL!!!

No rth

NORTHERN

The Sundial
Primer



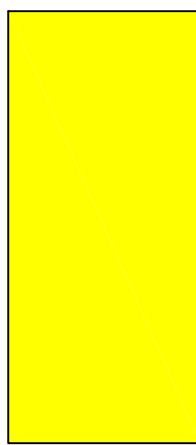
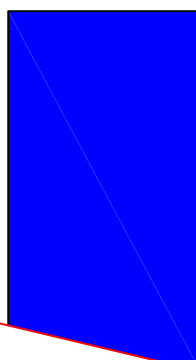
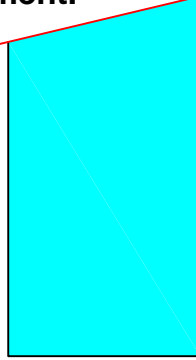
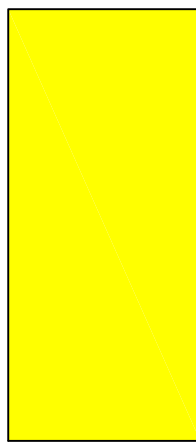
HEMISPHERE

Digital
Equatorial
Sundial



So uth

Glue to back of dial plate
for reinforcement.

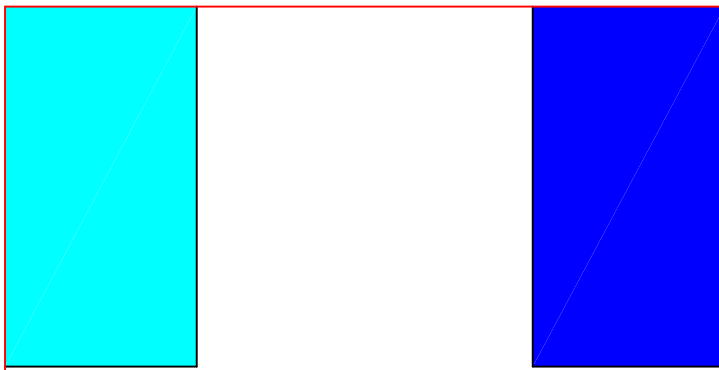
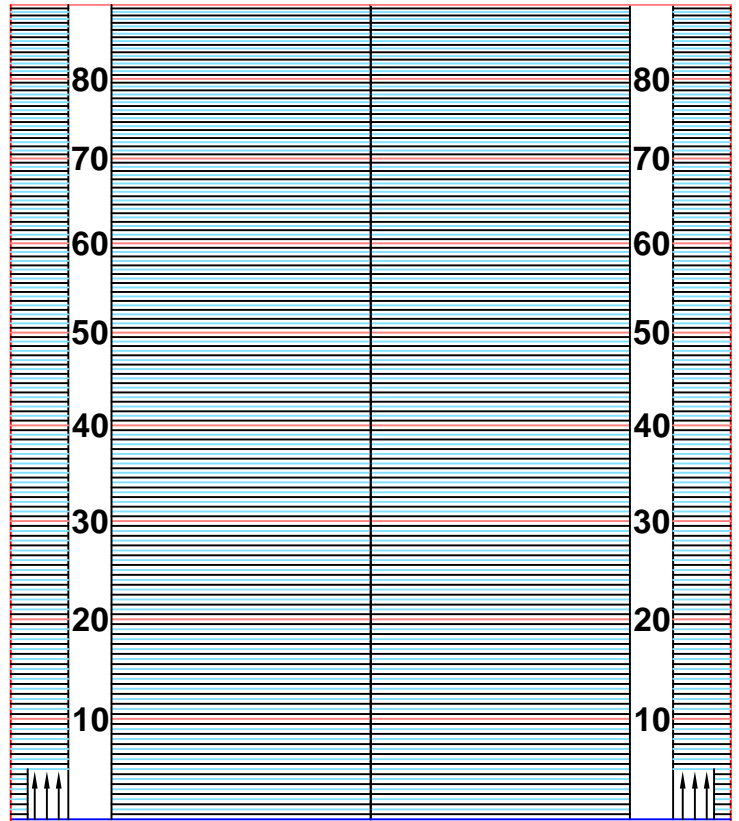


Cut out tab template. Place the lower line on your latitude line below. Make sure that the arrows all point in the same direction. Draw the template on to the latitude scale. Cut out the latitude scale and fold along your latitude line to make a tab. Glue this tab to the back of the dial plate where marked.

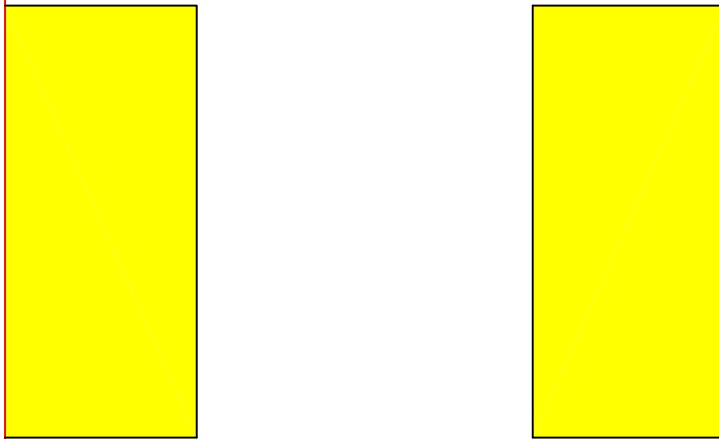


Tab Template

Latitude Plate

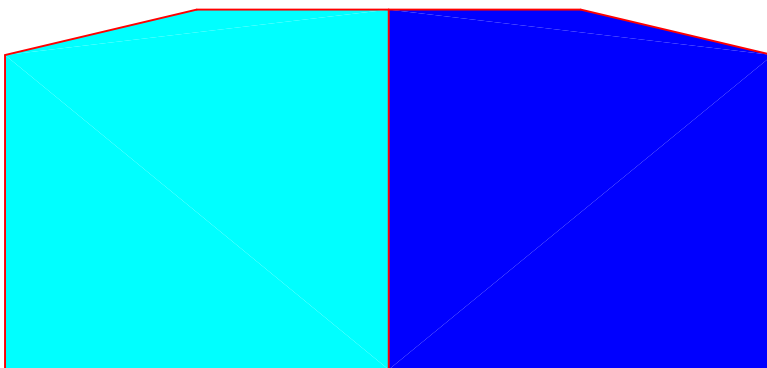


Glue latitude plate tab here.

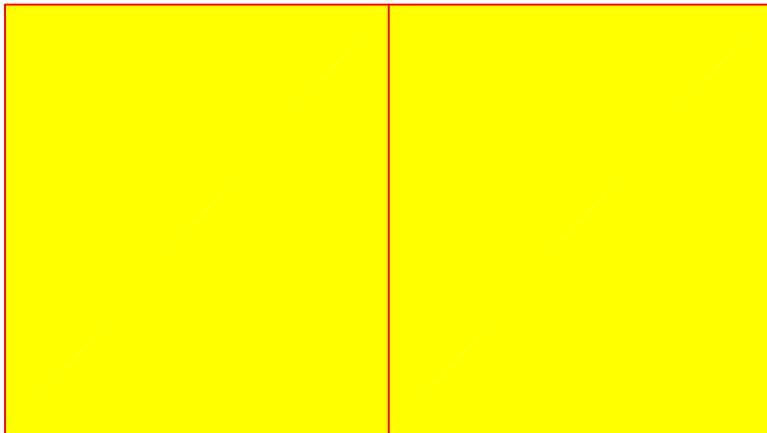


Glue base plate tab here.

Glue to back of dial plate for reinforcement and for latitude plate tab guide.



Glue to reinforce vertical joints.



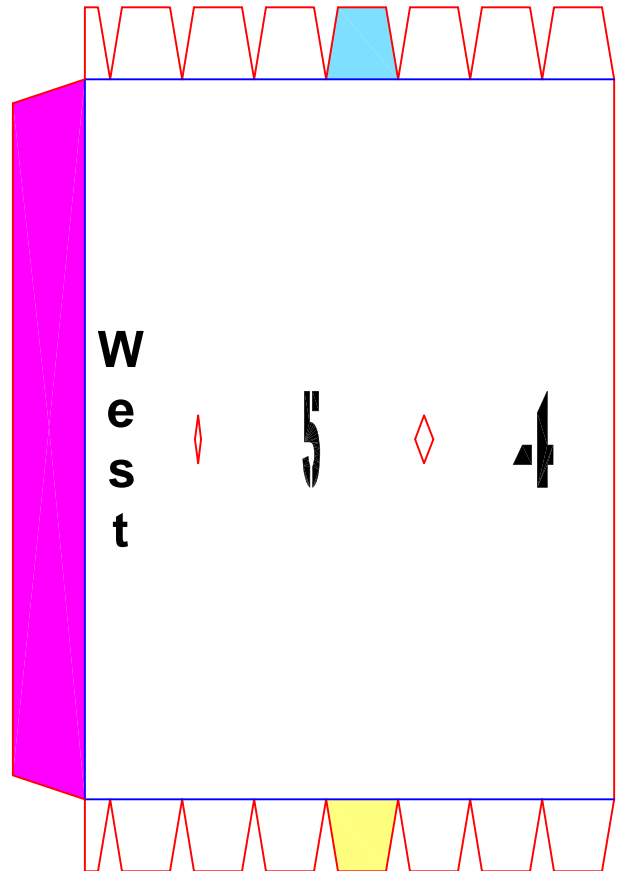
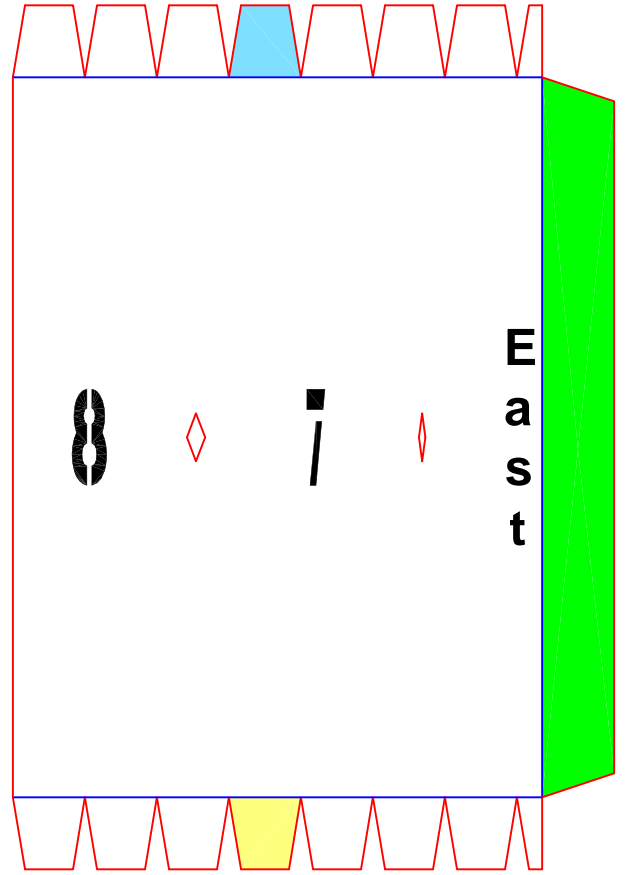
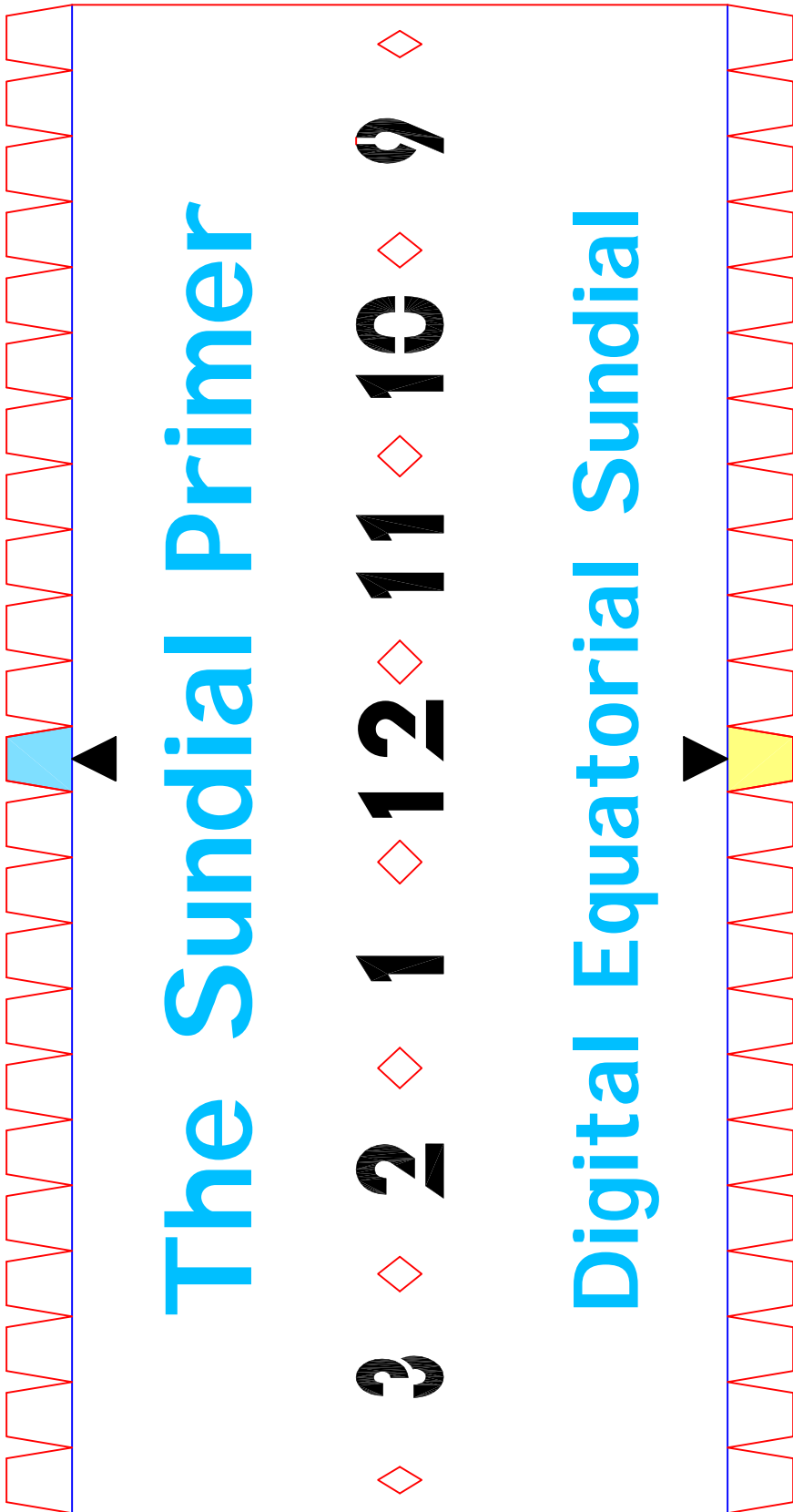
Base Plate

East

West

Glue to bottom of back of dial plate.

Glue to back of joints on hour ring.



Cut on the red lines.
Fold on the blue lines.

Cut out the hour numbers and diamonds on the hour ring with a craft knife.
BE CAREFUL!!!