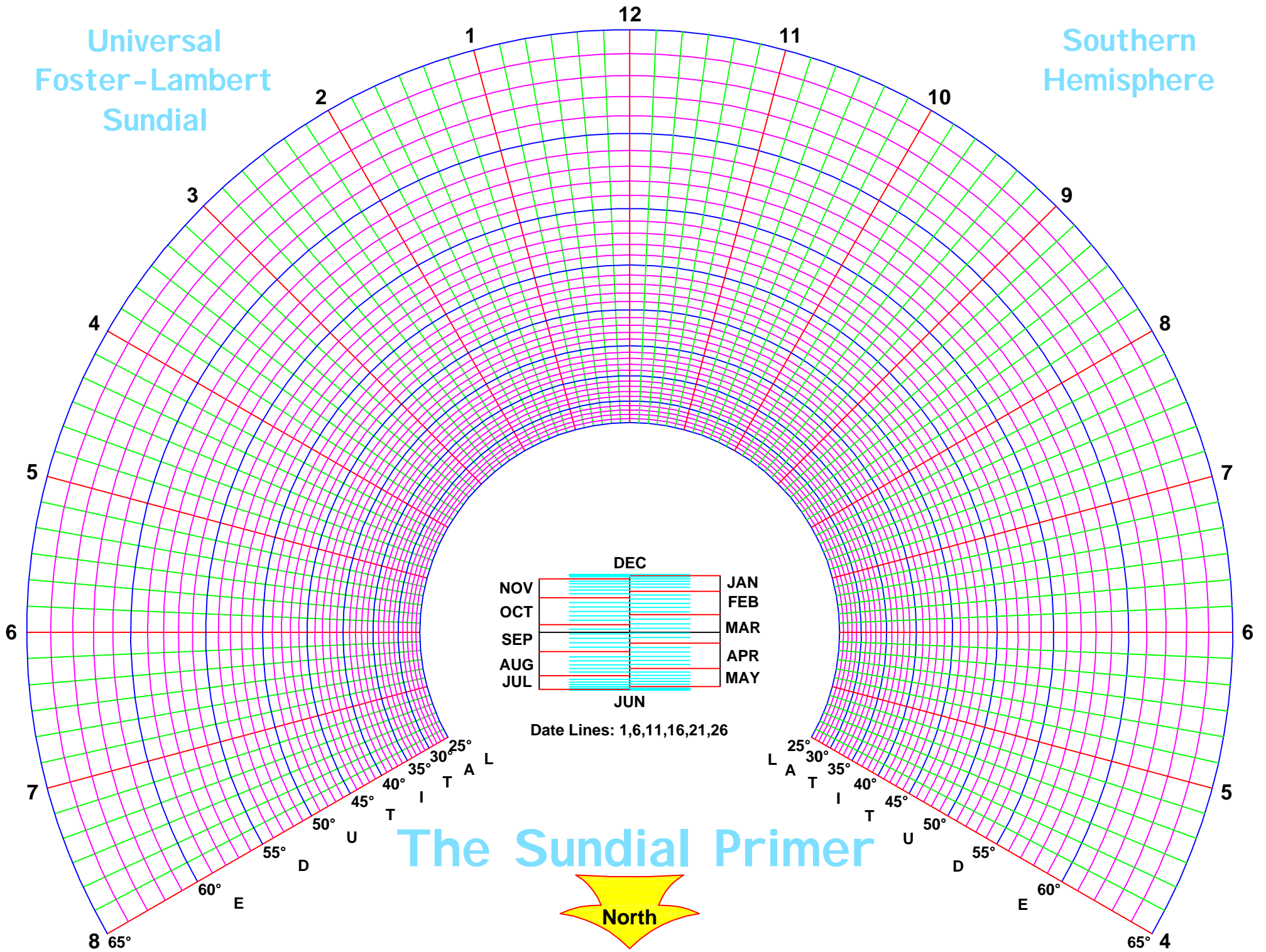


Universal  
Foster-Lambert  
Sundial

Southern  
Hemisphere

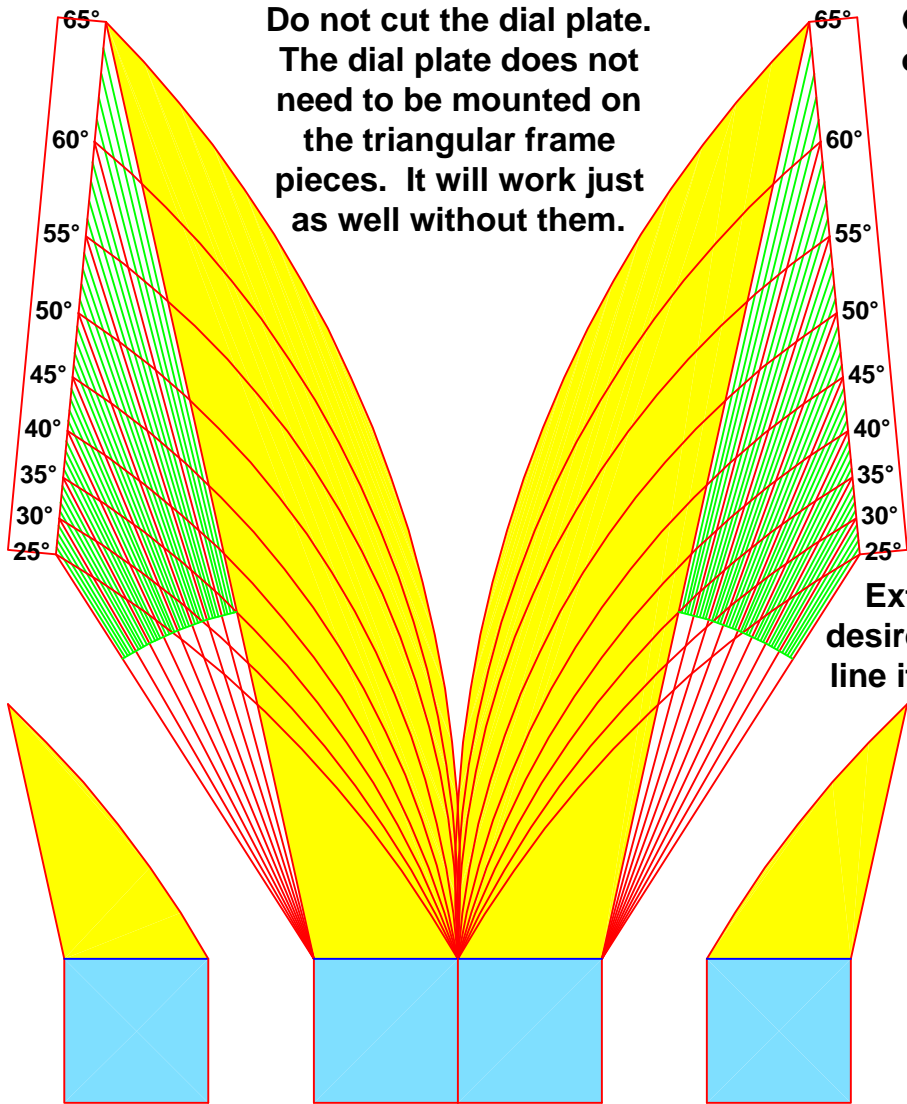


	DEC	
NOV		JAN
OCT		FEB
SEP		MAR
AUG		APR
JUL		MAY
	JUN	

Date Lines: 1,6,11,16,21,26

The Sundial Primer





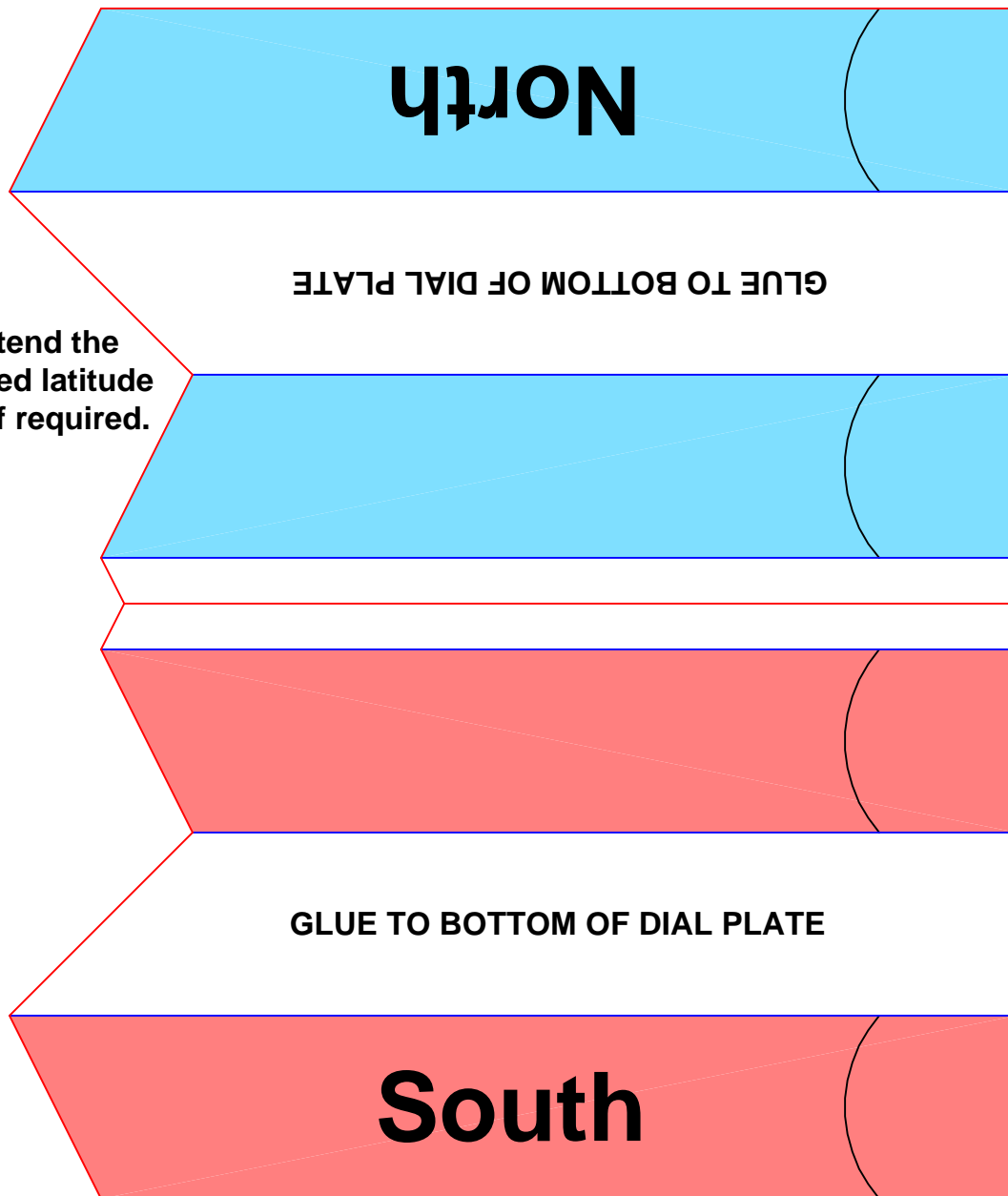
Do not cut the dial plate.  
The dial plate does not need to be mounted on the triangular frame pieces. It will work just as well without them.

Glue small weights on the tabs to keep the gnomon from tipping over.

Cut on red lines.  
Fold on blue lines.  
Glue tabs on the inside.

Extend the desired latitude line if required.

This is a fixed gnomon and can only be used at a single latitude once it is cut out. Cut out both halves of the gnomon in one piece and glue them together. Do not glue the base tabs. Find the desired latitude and cut along the appropriate lines. Curved lines are provided only for every 5° of latitude. For latitudes between estimate the curve or go up to the next curve. Glue the smaller shapes on the top of each half of the gnomon to stiffen the parts.

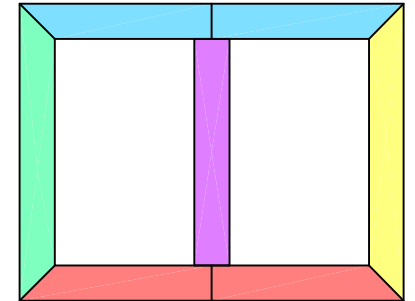


**East**

Cut on red lines.  
Fold on blue lines.  
Glue tabs on the inside.

GLUE TO BOTTOM OF DIAL PLATE

Frame layout diagram:  
The triangular frame is  
glued to the back of the  
dial plate for support. The  
location of the coloured  
frames depends upon the  
hemisphere. Carefully  
check the dial plate.

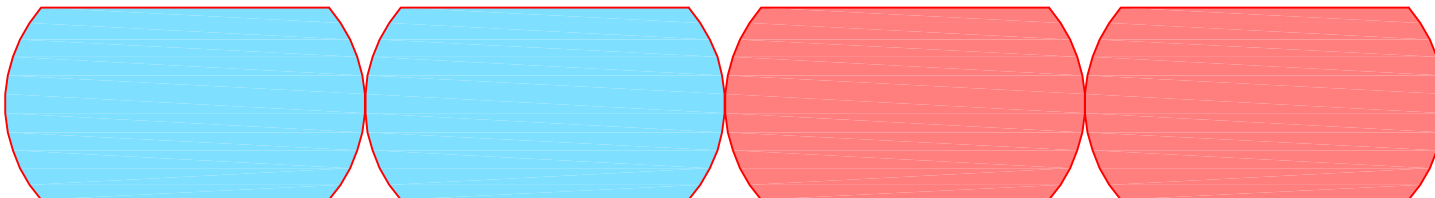


GLUE TO BOTTOM OF DIAL PLATE

The folded pieces will  
make triangular  
frames.

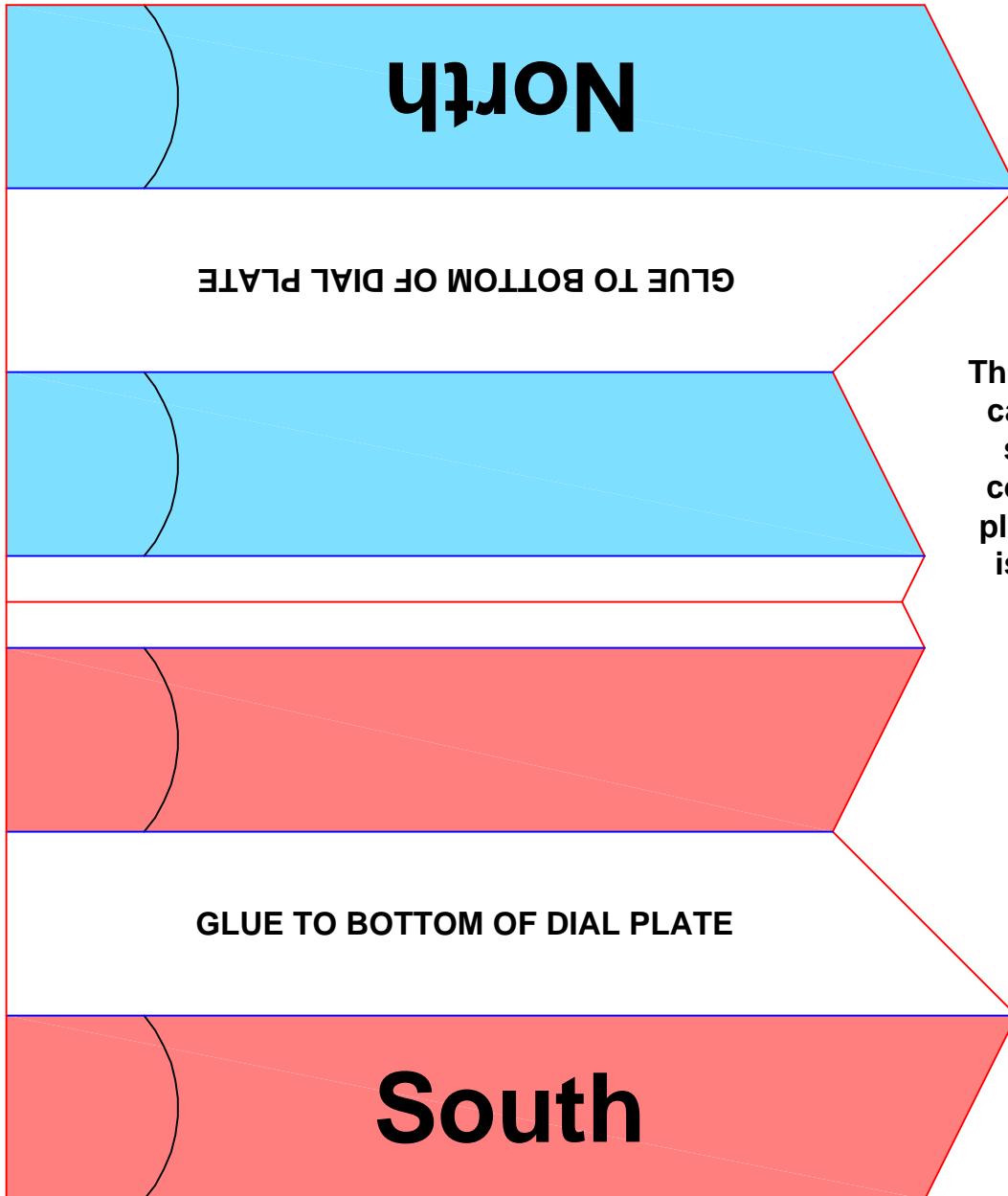
**West**

Cut and fold carefully  
so they will be a  
uniform height and the  
dial plate will be level  
after it is glued on.

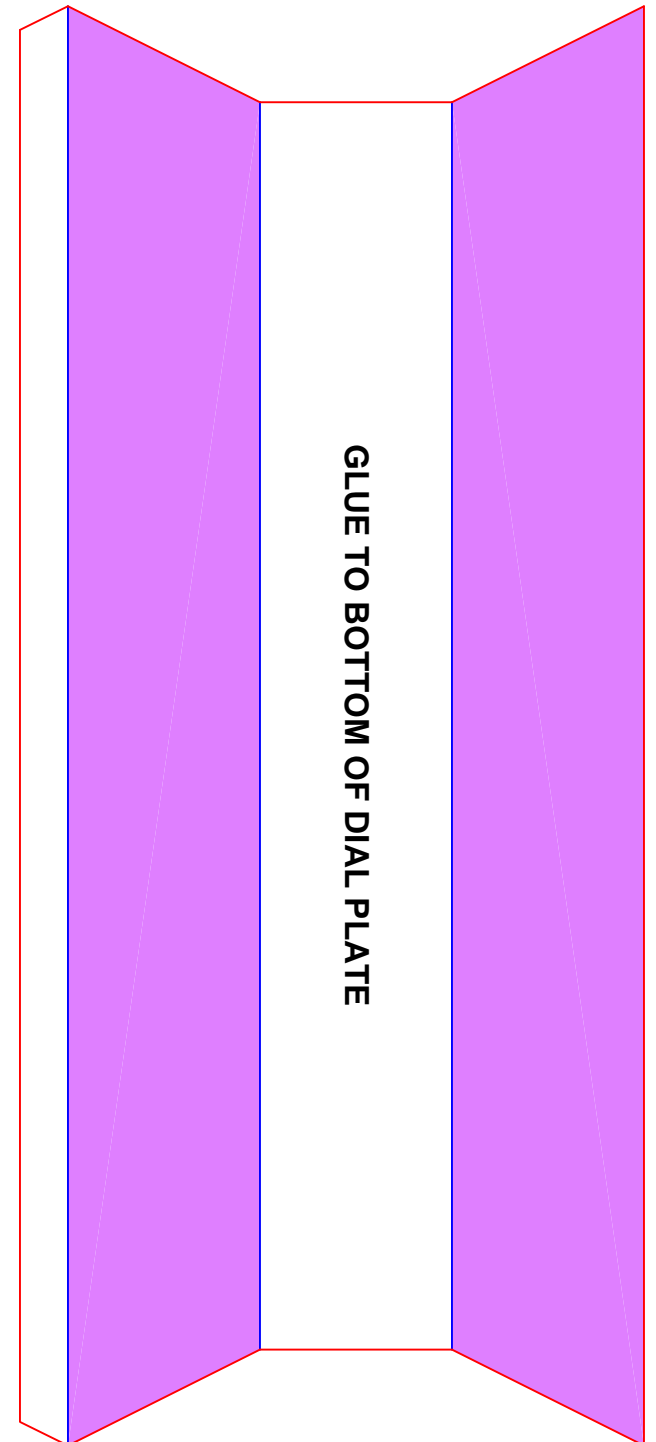


Use these to reinforce  
the inside and outside  
joints of the north  
and south frames.

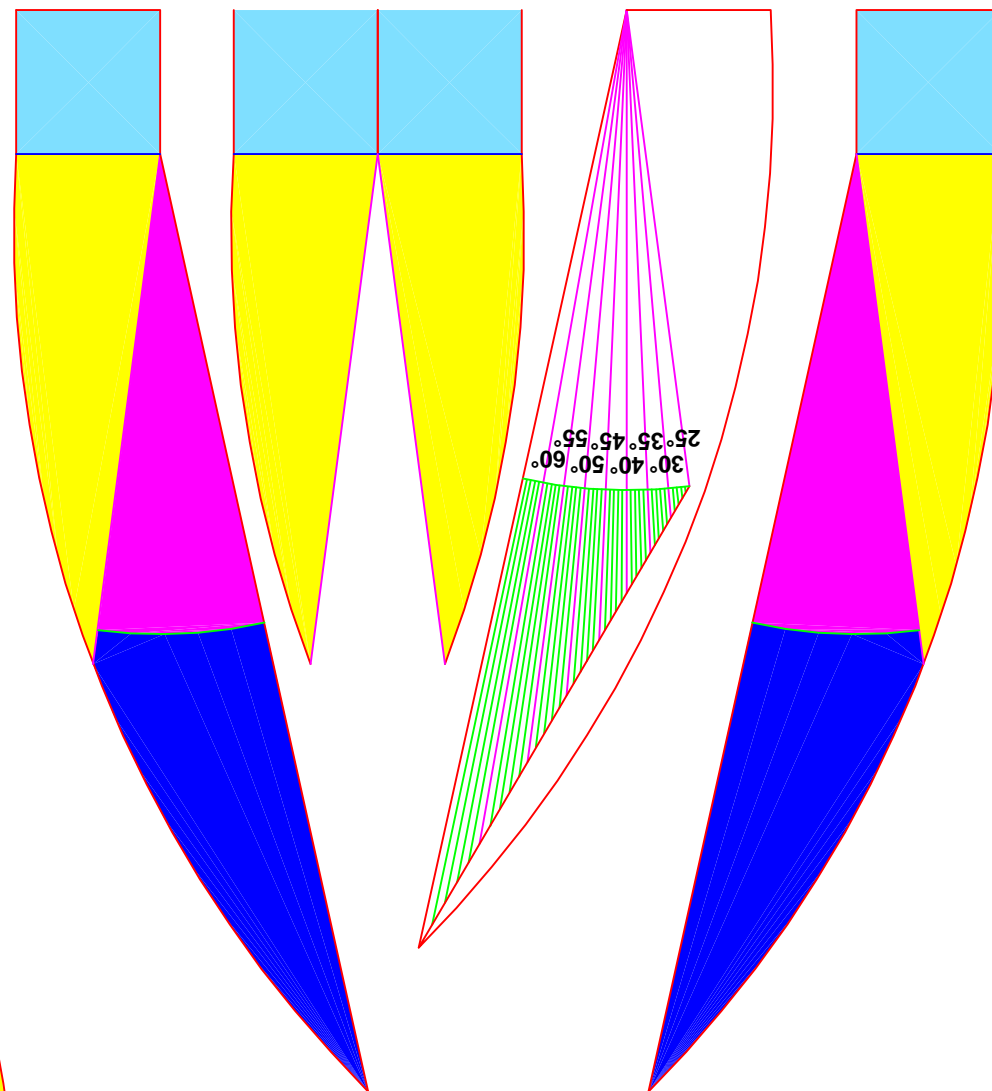
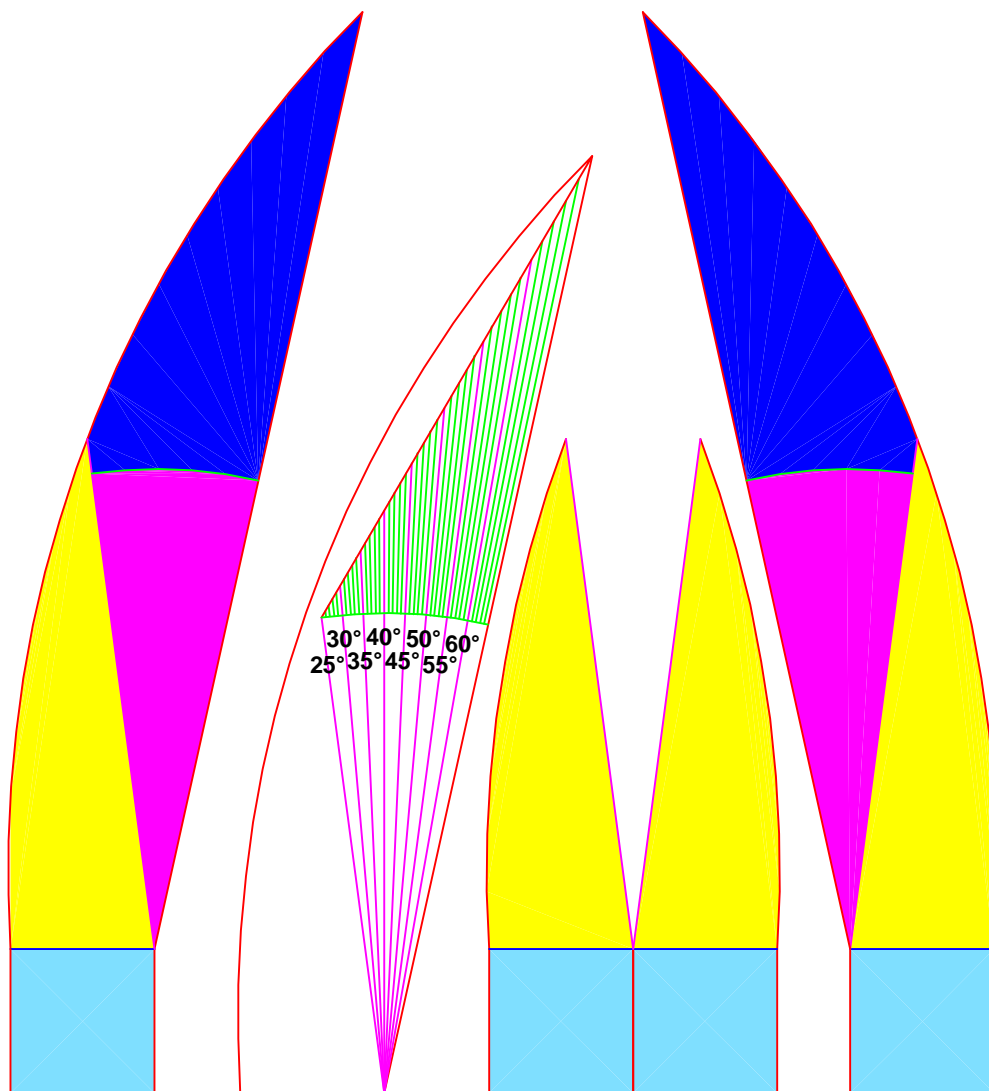
Cut on red lines.  
Fold on blue lines.  
Glue tabs on the inside.



This tringular piece  
can be used as a  
support up the  
centre of the dial  
plate. Its position  
is shown on the  
frame layout  
diagram.



**This is an adjustable gnomon and can be used at latitudes between 25° and 65°. Two of them can be made. Cut out both halves of the gnomon and the latitude guide. The latitude guide is positioned between the two sides and rotated to the desired latitude. Use a paper clip to hold the three parts together. Glue the smaller shapes on the top of each half of the gnomon to stiffen the parts.**



**Fold on the blue lines to make tabs for standing the gnomon up. A piece of clear tape across the bottom of the tabs will help to hold them together. Glue small weights on the tabs to keep the gnomon from tipping over.**