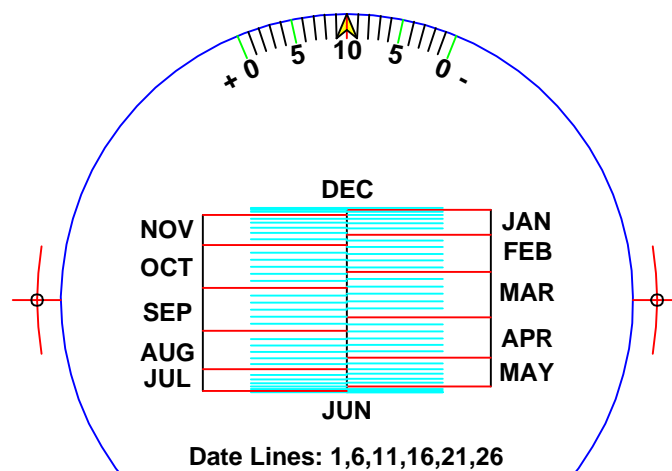


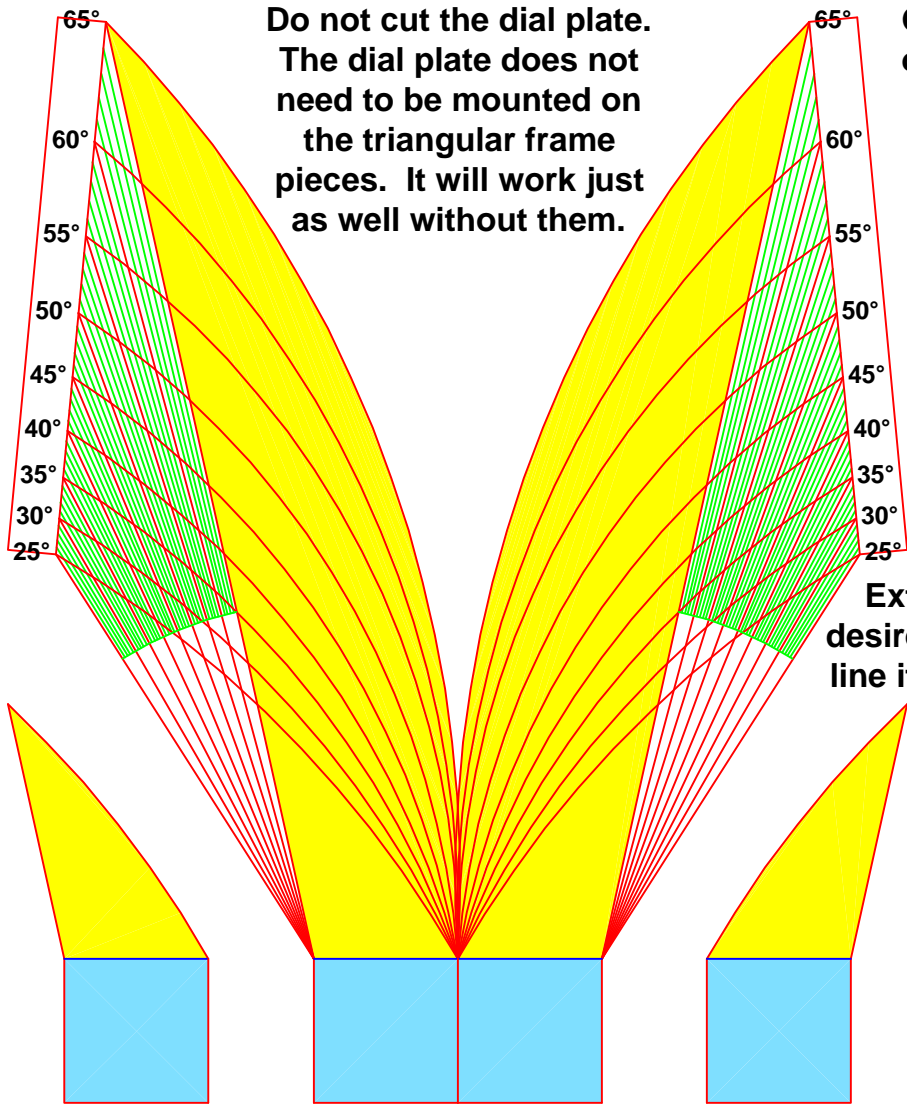
Universal
Foster-Lambert
Sundial

Southern
Hemisphere



The Sundial Primer





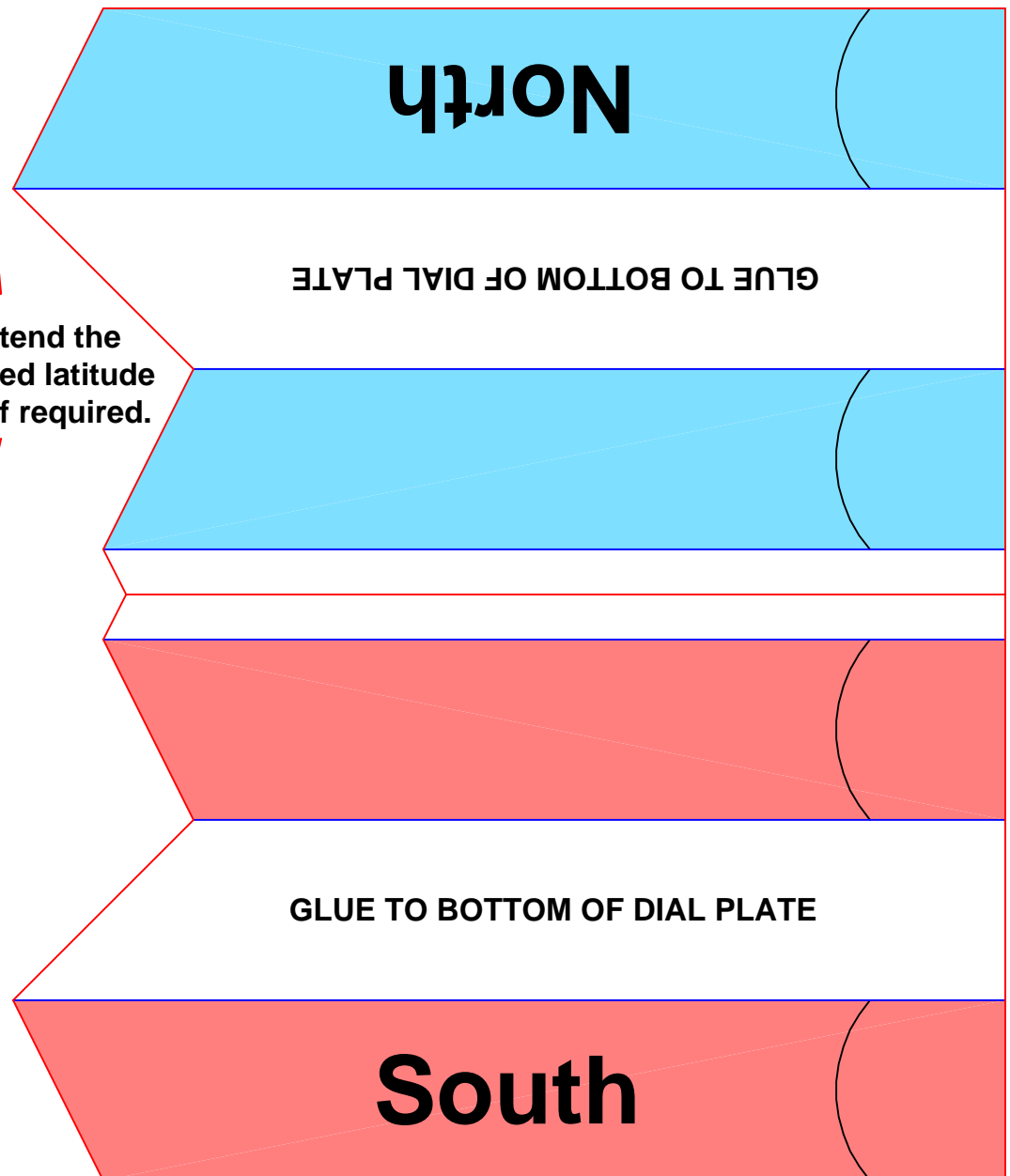
Do not cut the dial plate.
The dial plate does not need to be mounted on the triangular frame pieces. It will work just as well without them.

Glue small weights on the tabs to keep the gnomon from tipping over.

Cut on red lines.
Fold on blue lines.
Glue tabs on the inside.

Extend the desired latitude line if required.

This is a fixed gnomon and can only be used at a single latitude once it is cut out. Cut out both halves of the gnomon in one piece and glue them together. Do not glue the base tabs. Find the desired latitude and cut along the appropriate lines. Curved lines are provided only for every 5° of latitude. For latitudes between estimate the curve or go up to the next curve. Glue the smaller shapes on the top of each half of the gnomon to stiffen the parts.



East

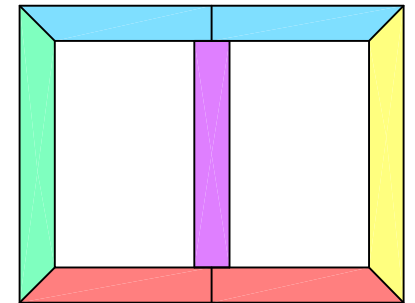
GLUE TO BOTTOM OF DIAL PLATE

GLUE TO BOTTOM OF DIAL PLATE

West

Cut on red lines.
Fold on blue lines.
Glue tabs on the inside.

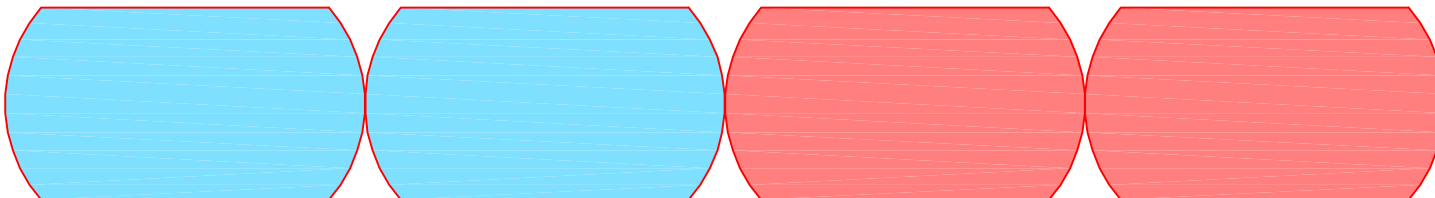
Frame layout diagram:
The triangular frame is
glued to the back of the
dial plate for support. The
location of the coloured
frames depends upon the
hemisphere. Carefully
check the dial plate.



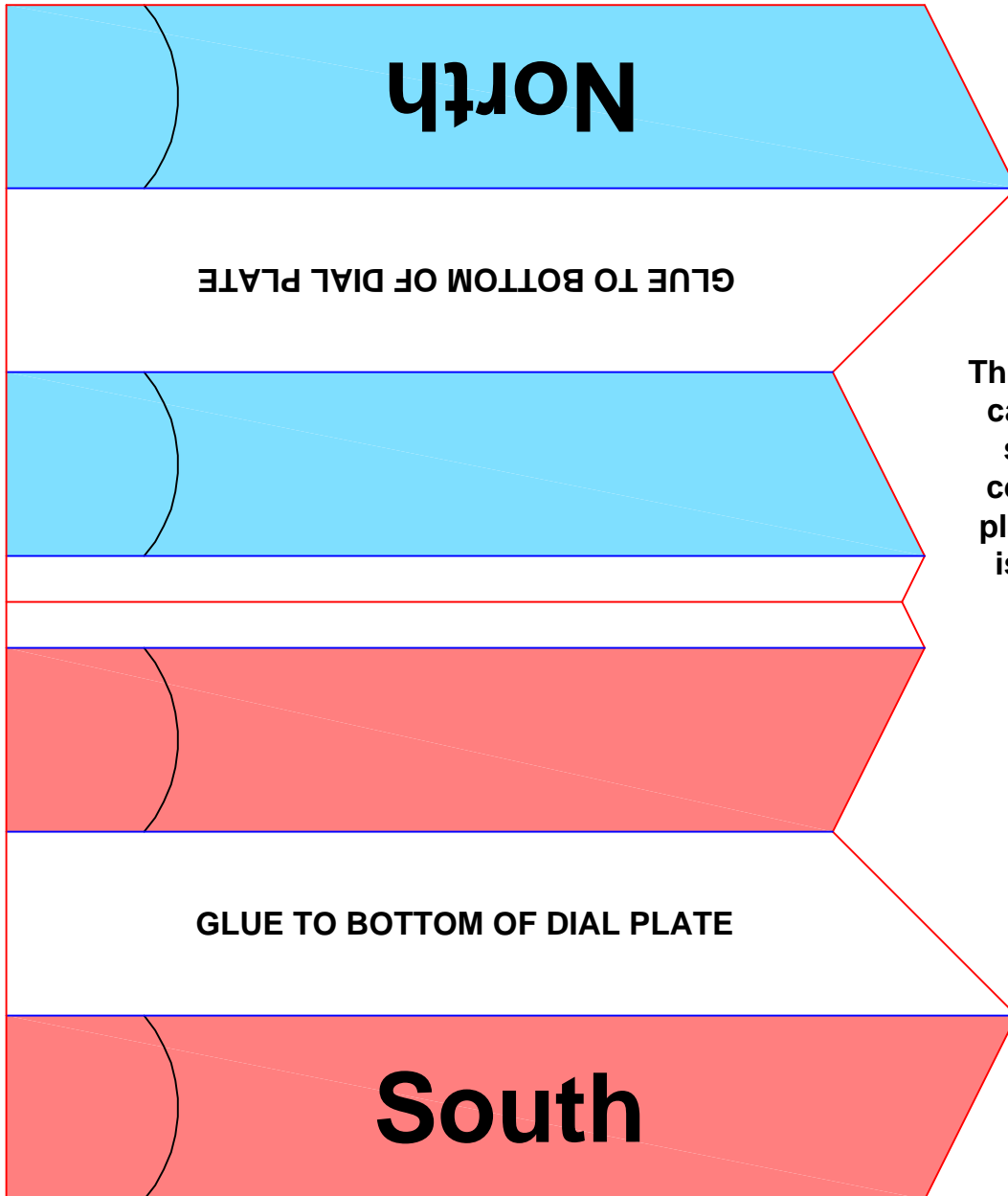
The folded pieces will
make triangular
frames.

Cut and fold carefully
so they will be a
uniform height and the
dial plate will be level
after it is glued on.

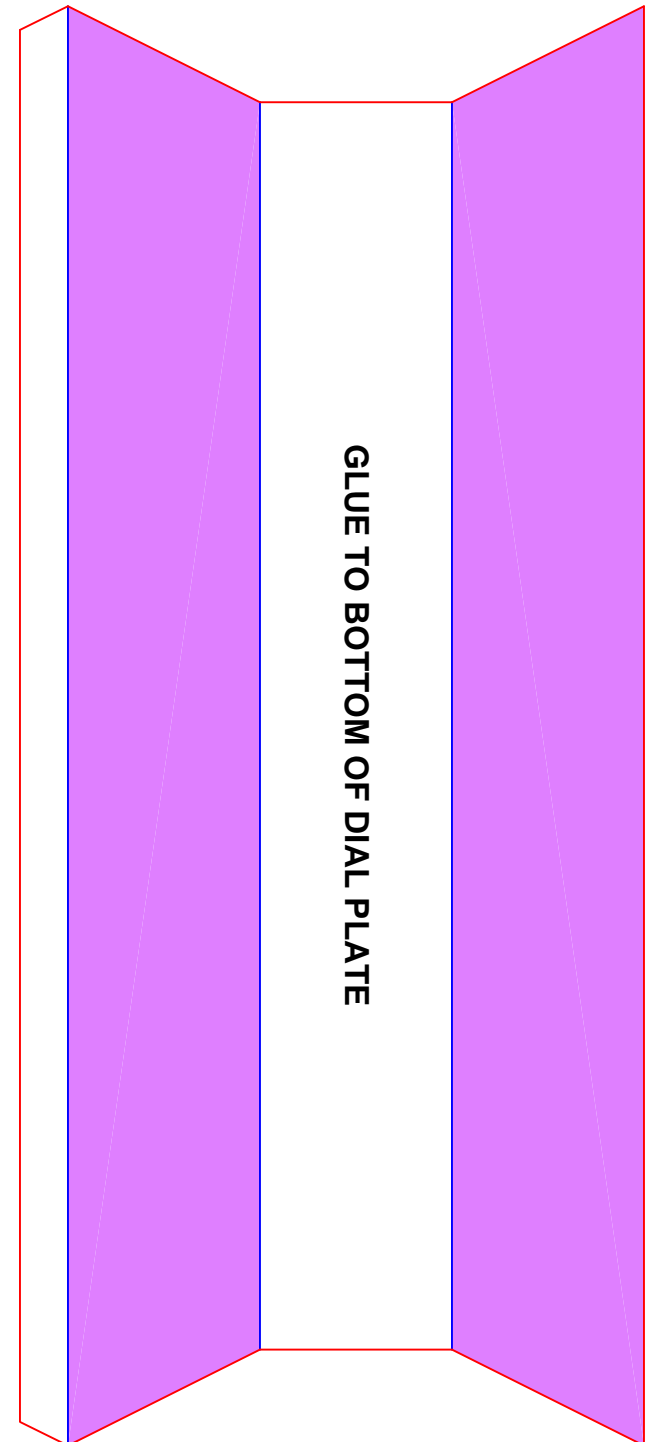
Use these to reinforce
the inside and outside
joints of the north
and south frames.



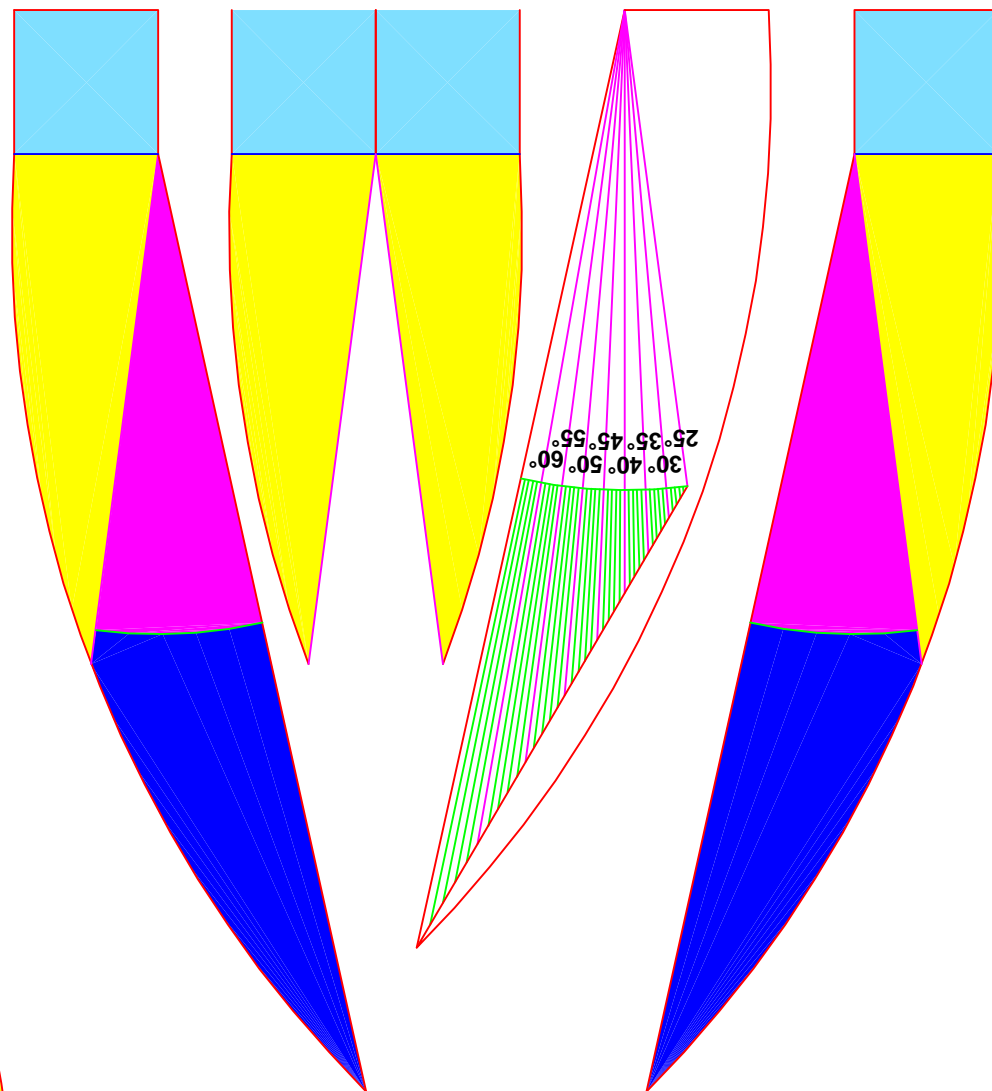
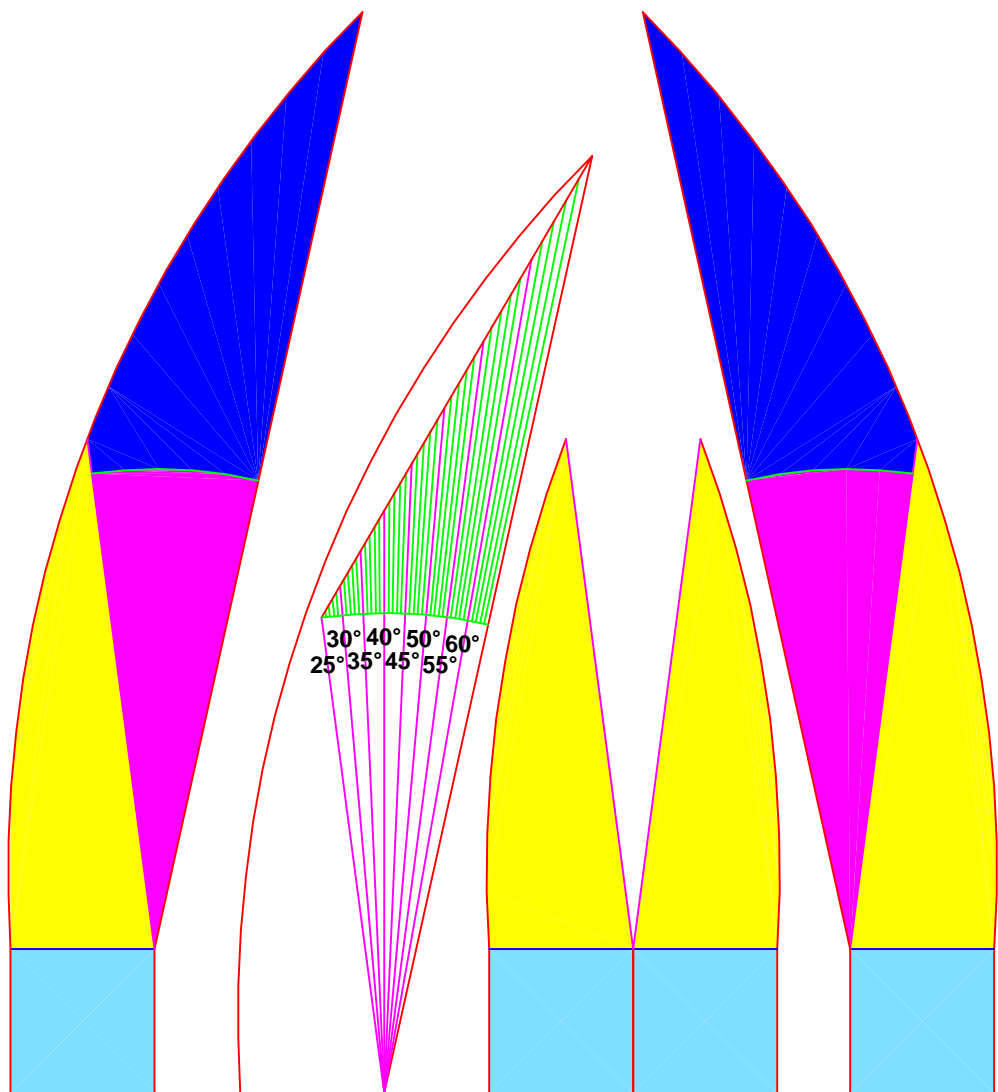
Cut on red lines.
Fold on blue lines.
Glue tabs on the inside.



This tringular piece
can be used as a
support up the
centre of the dial
plate. Its position
is shown on the
frame layout
diagram.



This is an adjustable gnomon and can be used at latitudes between 25° and 65°. Two of them can be made. Cut out both halves of the gnomon and the latitude guide. The latitude guide is positioned between the two sides and rotated to the desired latitude. Use a paper clip to hold the three parts together. Glue the smaller shapes on the top of each half of the gnomon to stiffen the parts.



Fold on the blue lines to make tabs for standing the gnomon up. A piece of clear tape across the bottom of the tabs will help to hold them together. Glue small weights on the tabs to keep the gnomon from tipping over.