

The Sundial Primer

Getting Started with SONNE

created by
Carl Sabanski

SONNE is a FREE software program developed by Helmut Sonderegger that will aid you in the design of a number of different sundials. As well as horizontal and vertical sundials, there are a number of other interesting designs. The software will include details such as hour numbers, months, and other details specific to a particular sundial design. It allows you to export its output in dxf format, which can then be opened in a CAD software package. You can then add additional details to the sundial design. To obtain this program go to the following site:

<http://web.utanet.at/sondereh/sun.htm>

There are two versions available. Version one consists of the program executable file and all the supporting files. Version two installs all the program files automatically.

When you download the software for version one it will come in the form of a zip file. You will need software to extract the files. I suggest that you create the directory "SONNE" where you can download and extract the program zip file. To start the program just select the "Sonne*.exe" file. There is no set up required. It's just that easy!

Figure 1 shows the SONNE introductory screen that appears when you start up either version of the program.

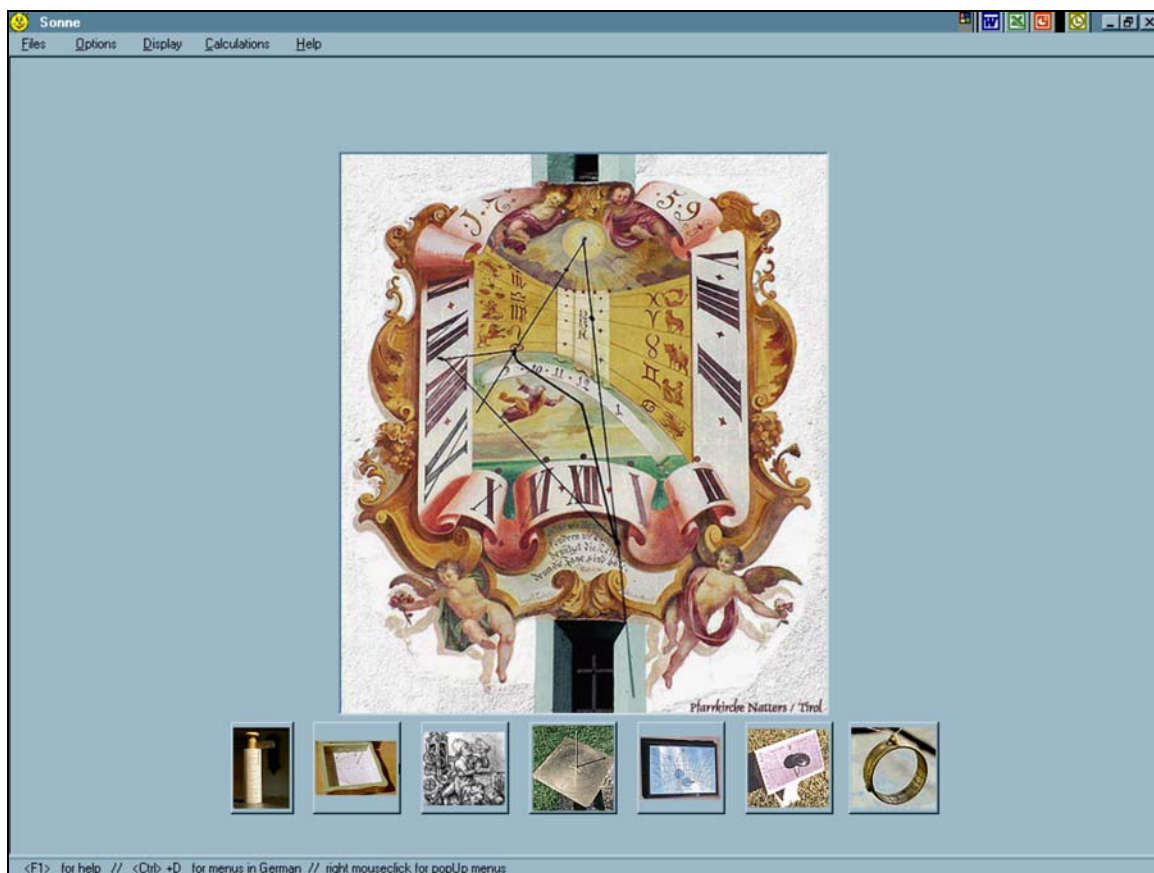


Figure 1: SONNE Intro Screen

Because there was no set up procedure involved with version one of SONNE, selecting “Start” and then “Programs” cannot be used to initiate the software. You will find no link to the software this way. To make it easy to start the program it is necessary to get an icon on the Desktop. This is easy to do. Just follow Figure 2. **Right click** on your “My Computer” icon, located on the Desktop, and select “Explore”. Select in sequence “Drive_c (C)” and the directory “SONNE” that was created. Find the file “Sonne*.exe” and **right click** on it. A new list of commands will appear as shown in the figure. Now select “Send To” and finally “Desktop (create shortcut)”. The SONNE logo shown on this last list will be placed on the Desktop. You can then move it wherever you like and select the shortcut to start the software.

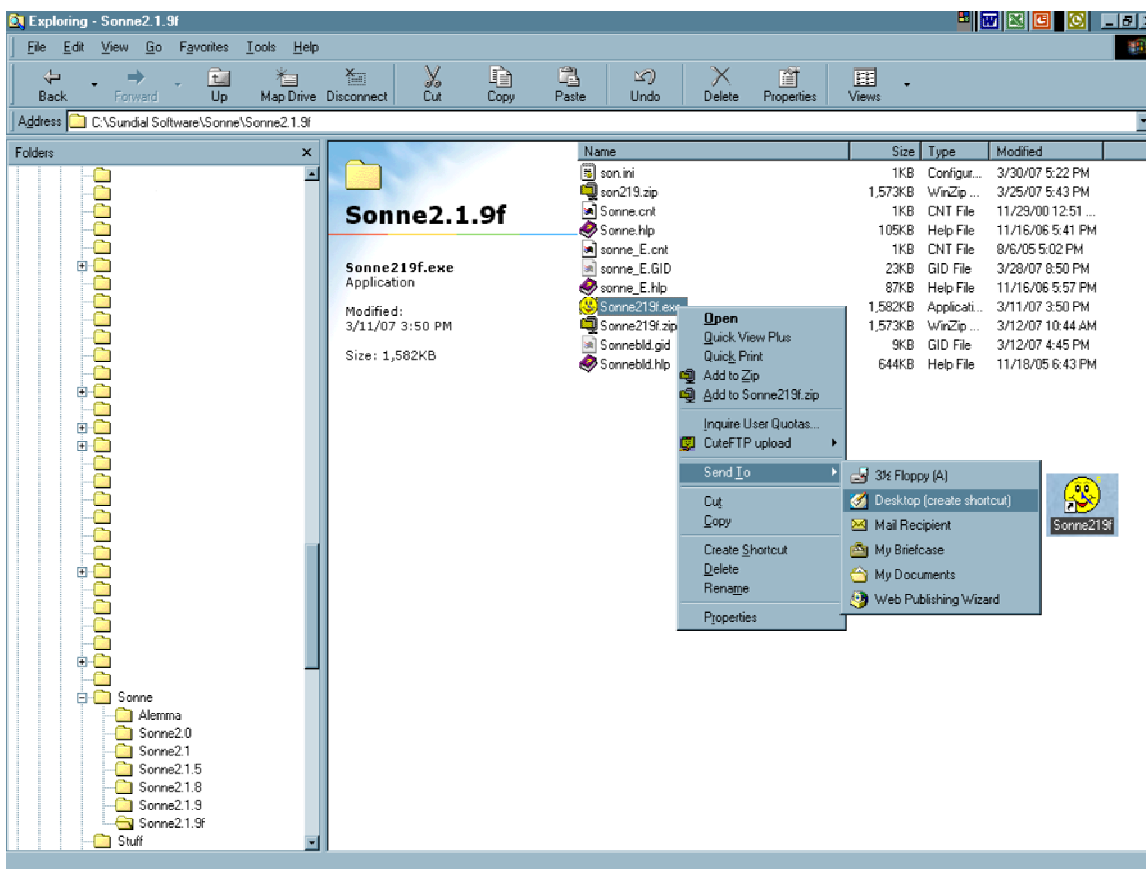


Figure 2: SONNE Shortcut (Version One)

Version two will install automatically and when you download the software it will also come in the form of a zip file. I suggest that you create the directory “SONNE” where you can download and extract the program zip file. To start the installation program just select the “Instso*.exe” file. Just follow the instructions.

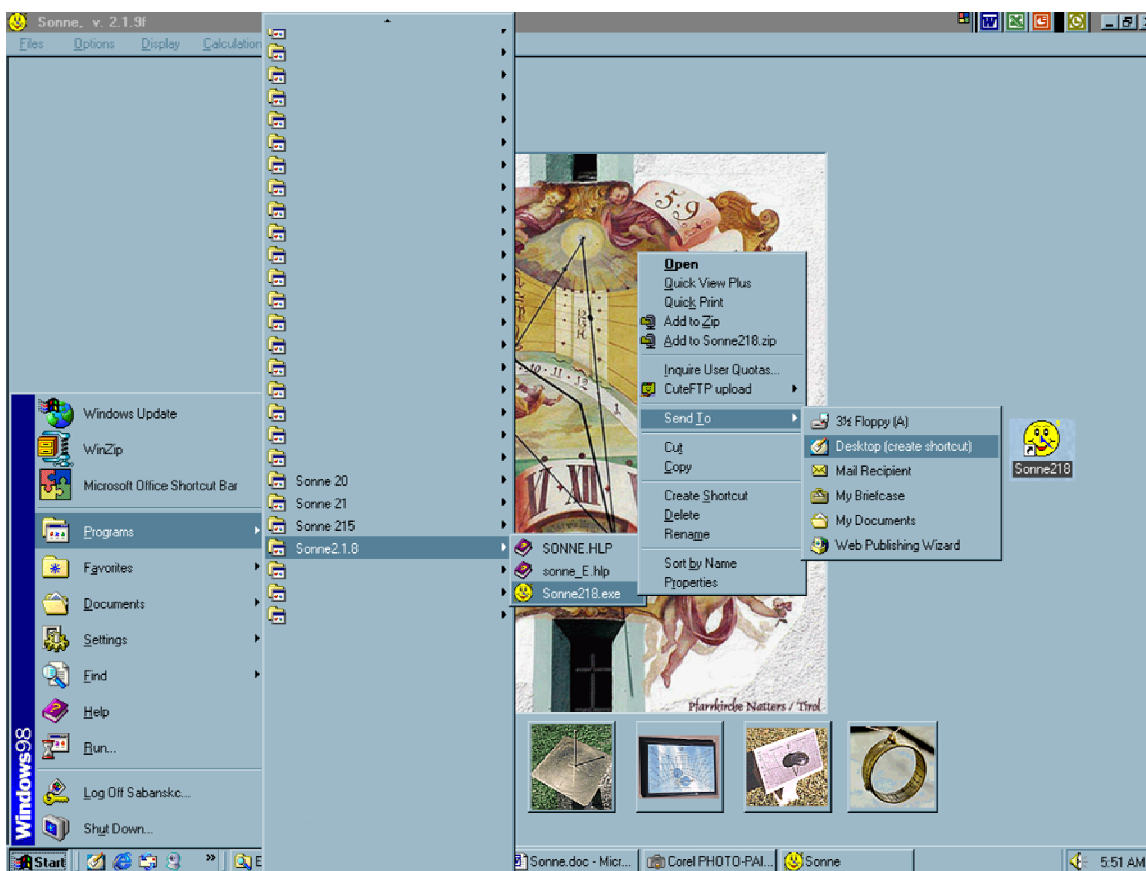


Figure 3: SONNE Shortcut (Version Two)

You can start version two of SONNE by selecting “Start” and then “Programs” and selecting the “Sonne*.exe” file as shown in Figure 3. Again there is no Desktop shortcut but following Figure 3 will help you create one.

This introduction is intended to help you get SONNE up and running, which is not a difficult task. It is not intended to teach you how to use the software. The one thing that will do that is to practice.

If you decide that you are not interested in SONNE you will want to get rid of the program. For version one all you have to do is delete the directory containing the files. For version two go to the directory in “Program Files” where SONNE was installed and select “Sxuninst.exe.” This does not remove the shortcut that you placed on the Desktop. **Right click** on the shortcut icon and select “Delete”. Say “GOODBYE”!